

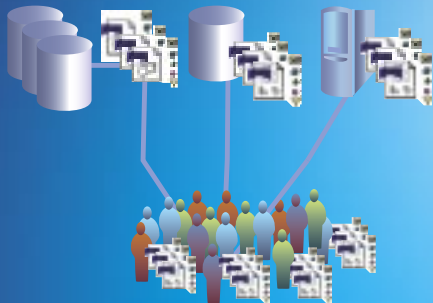
Business Intelligence Warehouse

Executive summary



Business Intelligence?

How many documents?
Where are they?
What objects do they use?
What is the impact of changing them?
Which documents have long refresh times?
Is BusinessObjects™ being used efficiently?



The Challenge

Managing your Business Intelligence

Utilising Business Intelligence (BI) to track, understand, and manage information in your organisation is likely to involve deploying BusinessObjects™ 5i or 6. But are you able to track, understand, and manage your BusinessObjects™ deployment successfully? Is your competitive advantage being eroded by inadequate auditing and ineffective analysis. Could your information management perform better, your user experience be enhanced? Business Intelligence Warehouse (BI Warehouse) can help you improve your Business Intelligence.

The solution

Business Intelligence Warehouse

BI Warehouse is an advanced auditing system for full client BusinessObjects™ 5i/6 deployments. BusinessObjects™ administrators can monitor how BusinessObjects™ is currently used within their company then proactively manage change, improvements and growth.

The benefits

Improved workflow

BI Warehouse can help your organisation improve its competitive advantage with:

- **Centralised control** – by employing a suite of data capture devices for audit activity
- **Reduced costs** – improved analysis helps optimise use of BusinessObjects™ licenses
- **Enhanced user experience** – from improved performance
- **Reduced impact from change** – impact analysis allows for targeted upgrade testing
- **Increased security** – greater knowledge and understanding of data accessed by users
- **Improved performance** – Monitoring and analysis enable scope to correct database, universe or training issues
- **Better understanding** – provides an accurate picture of how BusinessObjects™ is being used within a deployment



Centralised control and better understanding



Business Intelligence Warehouse

Technical summary

BI Warehouse : REPORTS

Which documents use a universes objects?

User Name	Class Object	Document	Administrator
...

The Features

Taking control of your data

BI Warehouse provides the Administrator with central control over the audit activity including:

- Activity capture
- Full audit of a user's document storage area
- Full audit of complete drives
- Force a complete re-audit
- Continuous audit of any documents opened
- Capture of operating system and BusinessObjects™ versions
- Capture of user details

BI Warehouse auditing tools capture

Activity details

- Logins/logouts, session duration
- Open, new documents, saved and closed actions, refresh durations

Document audit details

- Full audit of documents stored locally, on file servers and in the repository
- Document details – author, comments, last saved, file size, audit date etc
- Data provider details – universe name, data provider type, objects used in results and conditions
- WebIntelligence™ 2 and BusinessQuery™ documents can also be audited using one of the auditing tools

Universe details

- Domain, name, author, object parameters, joins, hierarchies, control options, parameters etc
- Universe object details – description, select, where, other parameters

Data is captured for the current audit. At some point in the future this can be archived and a new audit begun. This enables snapshots of usage to be profiled over time.

BI Warehouse : REPORTS

User activity

Rimmer

Logins	Logout	Open	Refresh	Close	Saved
2	2	2	0	0	2

Owen

Logins	Logout	Open	Refresh	Close	Saved
2	2	1	1	3	1

DBA

Logins	Logout	Open	Refresh	Close	Saved
17	16	16	0	0	7
3	3	0	0	0	0
22	24	1	0	0	0
4	4	0	4	0	4
17	16	17	0	0	27
16	16	4	1	0	20
4	0	1	1	0	1
2	16	3	0	2	19
7	8	3	0	1	7
2	0	2	0	0	0

For further information

T: +44 (0) 1225 832105

E: sales@SulisSystems.co.uk

www.SulisSystems.co.uk

BI Warehouse : REPORTS

Improving functionality

- Impact analysis of changes to universes or tables
- Determine which objects will be affected, which documents use them and where they are stored. Target upgrade testing prior to implementation avoiding wasted time and irritated users
- Manage BusinessObjects™ license usage by identifying inactive or read only users
- Refine universe design based on actual objects used
- Create smaller, streamlined universes to improve performance and improve end user experience
- Track document refresh durations to highlight poorly performing queries, whether refreshed interactively or via Broadcast Agent™
- Determine which documents are used most often and those that have become redundant

The Implementation

Minimal impact imposed

BI Warehouse imposes minimal impact on existing BusinessObjects™ environments and can capture data from existing and new documents.

System Requirements

- BusinessObjects™ version 5i/6
- BusinessObjects Repository™ and data sources can be any supported platform
- BI Warehouse requires Oracle, SQL Server or Access database
- Connectivity via OLEDB or ODBC
- If monitored, Broadcast Agent™ must be Windows™ based

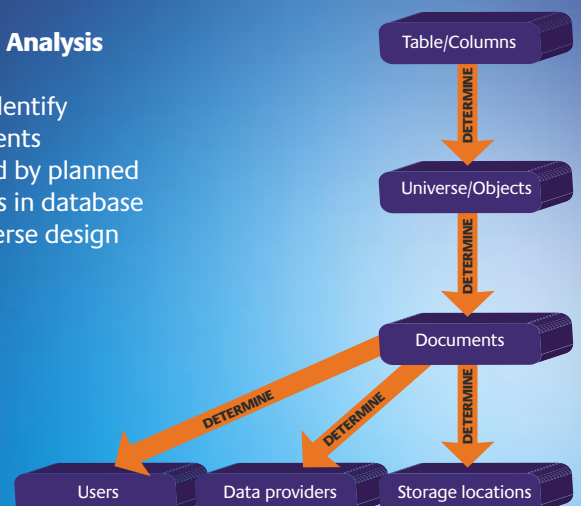
Number of concurrent users per hour



BI Warehouse : REPORTS

Impact Analysis

Easily identify documents affected by planned changes in database or universe design



Sulis Systems Limited

Consultancy, Training, Development in Business Intelligence Solutions...

Sulis Systems Limited

220 Old Frome Road
Combe Down
Bath BA2 5RH
United Kingdom

T: +44 (0) 1225 832105
E: sales@SulisSystems.co.uk
www.SulisSystems.co.uk

Customised BusinessObjects Training

Flexible and personal

Sulis Systems has provided certified training and public course development on behalf of Business Objects. Courses range from end user training, Designer, Supervisor to the more technical courses such as Architecture and Deployment, programmability and Set Analyzer™.

A number of our clients have asked Sulis Systems to provide customised training. In response to this request we now offer a wide range of quality courses. For further information regarding courses relevant to you and your organisation please contact us or visit our website.

The courses can be further configured to provide the exact contents you require, or to use your own corporate data.

Documentation Aids

Essential Management Tools

Universe and BO Documenter, two applications developed by Sulis Systems that produce professional automated documentation for universes and documents. For full details visit our web site.

Sulis Systems Limited

Deep knowledge, vast experience

Sulis Systems is an independent IT consultancy based in the beautiful city of Bath in the UK. The company specialises in consultancy, development and training services for Business Objects products.

Working entirely on BusinessObjects™ projects for a range of clients since 1996, the company has developed an in-depth knowledge of the current product range including, BusinessObjects™, WebIntelligence™ and Set Analyzer™. This knowledge covers both production and class room experience.

Sulis Systems objective is to ensure the best use of Business Objects products without the hype.

BusinessObjects 5i/6 Training

Comprehensive User	2 day
Reporter	1 day
Explorer	1 day
Designer	3 days
Supervisor	1 day
Advanced Techniques	1 day
WebIntelligence™ – HTML Panel	2 days
WebIntelligence™ – Java Panel	2 days
VBA –	
Programmability 5i/6	4 days

We also offer free format workshops where your team can discuss problem documents, focus on specific functionality or other relevant technical matters.

Further Services

- Development using the BusinessObjects™ and WebIntelligence™ SDK's
- Universe and Report creation
- Site health-checks and audits
- Implementation consultancy
- Documentation services using our utilities

